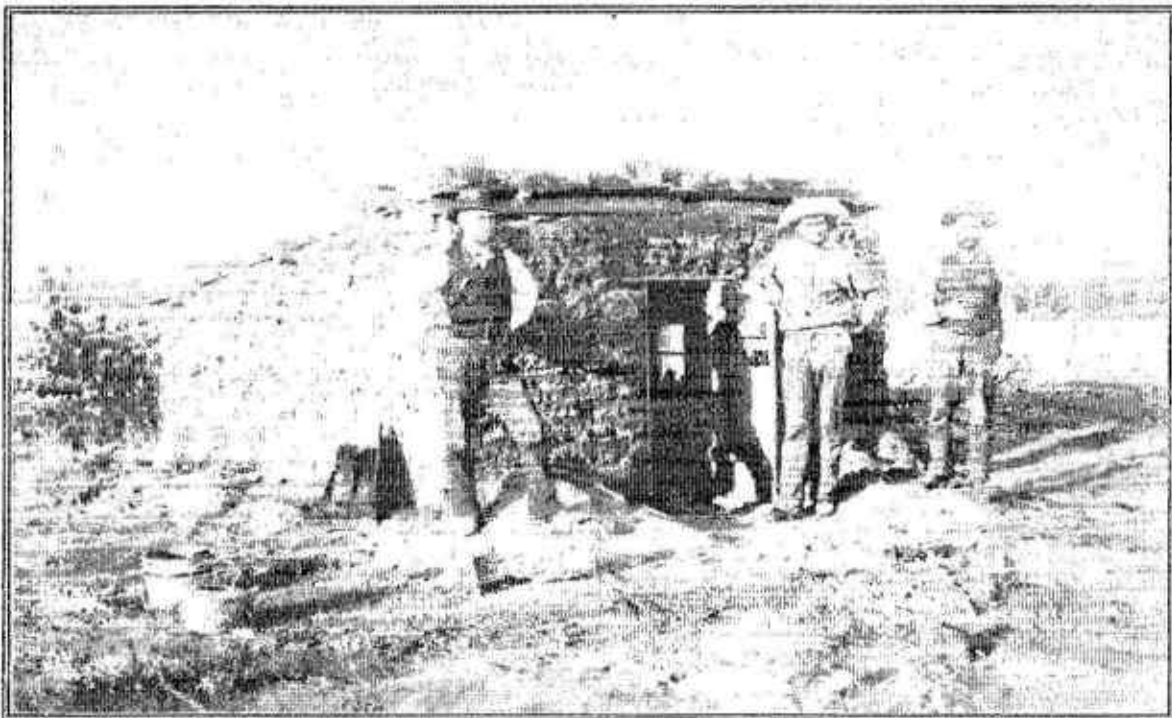


OXLEY REFERENCE ONLY

The Family Story of Adrienne Sautter Great-Grandfather of Pat Oxley

Adrienne Sautter was born June 2, 1853, in Switzerland. He was sent to a Catholic monastery in Germany for his education. When he returned to Switzerland, he had grown into a independent, adventuresome young man. As a younger son with no prospect of inheriting the family business, he decided to seek his fortune in the United States. In 1878 he traveled by train through Wichita on his way to Clearwater where there was a small Swiss community of merchants and farmers. After a few months of buffalo hunting and exploring, he purchased the piece of land near Clearwater shown in these photographs.



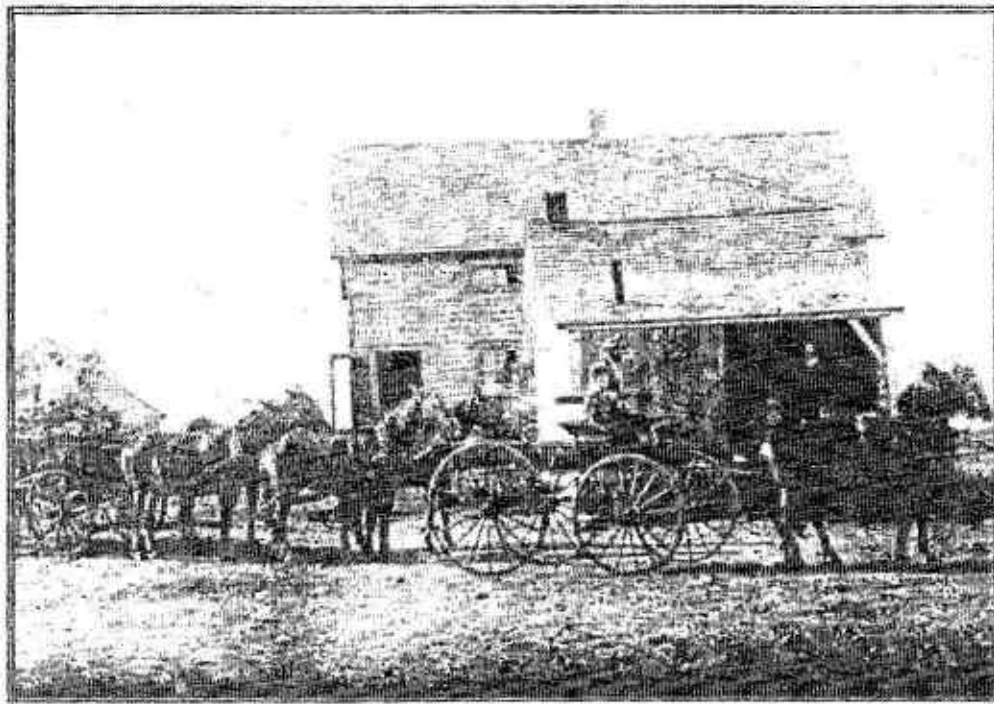
This sod house was on the land that Adrienne Sautter bought. The sod house was built about 1860 by the three men shown here in the photograph who were horse thieves. The thieves were from Lawrence, and the property, then part of the Indian Trust Lands, is thought to be the site where these thieves moved stolen horses to and from Texas. The structure had a dug-out basement with cottonwood logs across the top that formed the floor of the sod house built over it. Adrienne Sautter eventually built the farmstead directly around the house. The property is still in the family along with the original of this photograph.

The Family Story of Adrienne Sautter Great-Grandfather of Pat Oxley



This is the first cabin that Adrienne Sautter built about 1879 on the land he bought. He and his wife lived here while the large house was being built.

The photograph below shows the farm house that Adrienne Sautter built and where he and his wife raised their family. They are shown in the spring wagon with daughter Jennie on the porch of the little house than is now at Cow Town and known as "The Trapper's Cabin.

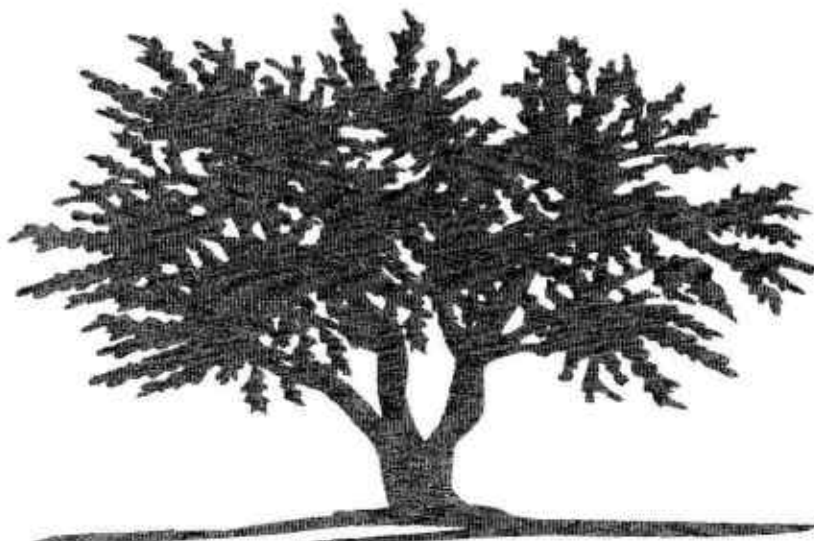


The Family Story of Adrienne Sautter Great-Grandfather of Pat Oxley

Adrienne Sautter married Susie Armour November 5, 1879. They had two children, a son Louis James and a daughter Jennie Elizabeth who would marry Lloyd Payton Warren and become the grandmother of Pat Oxley, a member of Wichita Genealogical Society.

Although the farm was never very successful, daughter Jennie had a good head for business. As her father's assistant, she managed a small general store he owned in Clearwater that did very well.

About 1910 Adrienne and Susie left the farm and moved to Wichita. Adrienne died November 17, 1939, and Susie died April 29, 1945



Donated By
LaRocca Estate

NEW BOOKS IN THE GENEALOGY COLLECTION, WICHITA PUBLIC LIBRARY
APRIL THROUGH JUNE, 2008



- Ancestry of Diana, Princess of Wales For Twelve Generations*, by Richard K. Evans. (R 929.2 SPENCER)
Best Genealogical Sources in Print: Essays by Gary Boyd Roberts, by Gary Boyd Roberts. (R 016.9 ROB V.1)
Cerro Gordo County, Iowa Cemeteries: Bohemian Cemetery Records, Plymouth, IA, by North Central Iowa Gen. Society. (R 977.725 CER)
Confederate Records from the United Daughters of the Confederacy Files, by Joanne Chiles Eakin. (R 973.7478 EAK V.1-8)
Dictionary of National Biography: From the Earliest Times to 1900, by George Smith. (R 920 DIC V. 1 & Supplements)
Dictionary of National Biography: Missing Persons, edited by C.S. Nicholls. (R 920 DIC)
Dictionary of National Biography: the Concise Dictionary from the Beginnings to 1921 Covering 1901-1921. (R 920 DIC PT.1-2)
Early American Roads and Trails, by Beverly Whitaker. (R 917.3 WHI)
Fenni-2: More Finns Among Us: a History of the Finns in America, by Art Jura. (R 973.049 JUR)
Finding Your Mexican Ancestors: a Beginner's Guide, George Ryskamp. (R 929.1 RYS)
Genealogical Writing in the 21st Century: a Guide to Register Style and More, by Michael J. Leclerc and Henry B. Hoff. (R 929.1 GEN)
Genealogy Online, 8th Edition, by Elizabeth Powell Crowe. (R 929.1 CRO)
German Immigrants in American Church Records, by Roger P. Minert. (R 929.3 GER V.3-5)
Germans of Louisiana, by Ellen C. Merrill. (R 976.3 MER)
Great Migration: Immigrants to New England, 1634-1635, by Robert Charles Anderson. (R 974 AND V.5)
Great Migration Newsletter, by the Great Migration Study Project. (R 974 GRE 2002/06 V.11-15)
Guide to Massachusetts Cemeteries, by David Allen Lambert. (R 974.4 LAM)
History of Haverhill, Massachusetts, by George Wingate Chase. (R 974.45 CHA)
History of Islesborough, Maine, by John Pendleton Farrow. (R 974.152 FAR)
History of Pike County, Illinois: Together with Sketches of its Cities, Villages and Townships, by C.C. Chapman and Company. (R 977.3453 HIS V.1-2)
In Search of Your Confederate Ancestors, by J. H. Segars. (R 929.1 SEG)
Italians to America: Lists of Passengers Arriving at U.S. Ports, edited by Ira A. Glazier and P. William Filby. (R 929.1 ITA V. 2-3)
Kentucky Land Grants: a Systematic Index to all of the Land Grants Recorded in the State Land Office at Frankfort, KY, 1782-1924, by Willard Jillson. (R 976.9 JIL V.1-2)
Manual of Delta Upsilon. (R 371.855 MAN)
Mayflower Families Through Five Generations: Descendants of the Pilgrims Who Landed at Plymouth, Mass., December 1620, by General Society of Mayflower Descendants. (R929.2 M4683 V.20PT.3 Henry Samson)
Memoirs and Musings, by John Otto. (R 289.7 OTT)
New York Essays: Resources for the Genealogist in New York State Outside New York City, by Marian S. Henry. (R 974.7 HEN)
Nineteenth Century Military Veterans Known Buried in Osborne County, Kansas, by Von Rothenberger. (R 973.74 ROT)
Researcher's Guide to Boston, by Ann S. Lainhart. (R 016.929 LAI)
Salem County, New Jersey, Genealogical Data: Records Pertaining to Persons Residing in Salem County Prior to 1800, by H. Stanley Craig. (R 929.374991 CRA V.1-2)
Salem County (New Jersey) Marriage Records, by H. Stanley Craig. (R 929.374991 CRA)
Schwarzwald Church Register: Exeter Township, Berks Co., PA, by J. Wilhelm Boos. (R 929.374816 BOO)
Second or 1807 Land Lottery of Georgia, by Silas Emmett Lucas, Jr. (R 929.3758 LUC)
Sedgwick County, Kansas Naturalizations and Declarations of Intentions: 1870 to September 26, 1906, by Barbara R. Marsh. (R 929.378186 MAR)
Settlers of Colonial Calvert County, Maryland, by Elise Greenup Jourdan. (R 929.375244 JOU)
Settlers of Colonial St. Mary's County, Maryland, by Elise Greenup Jourdan. (R 929.375241 JOL)
Sevier County, Arkansas, Cemetery Records by Joy Webb Raper. (R 976.747 RAP)
Shenandoah County Marriage Bonds, 1772-1850, by John Vogt. (R 929.375595 VOG)

ORANGE COUNTY CALIFORNIA
GENEALOGICAL SOCIETY